

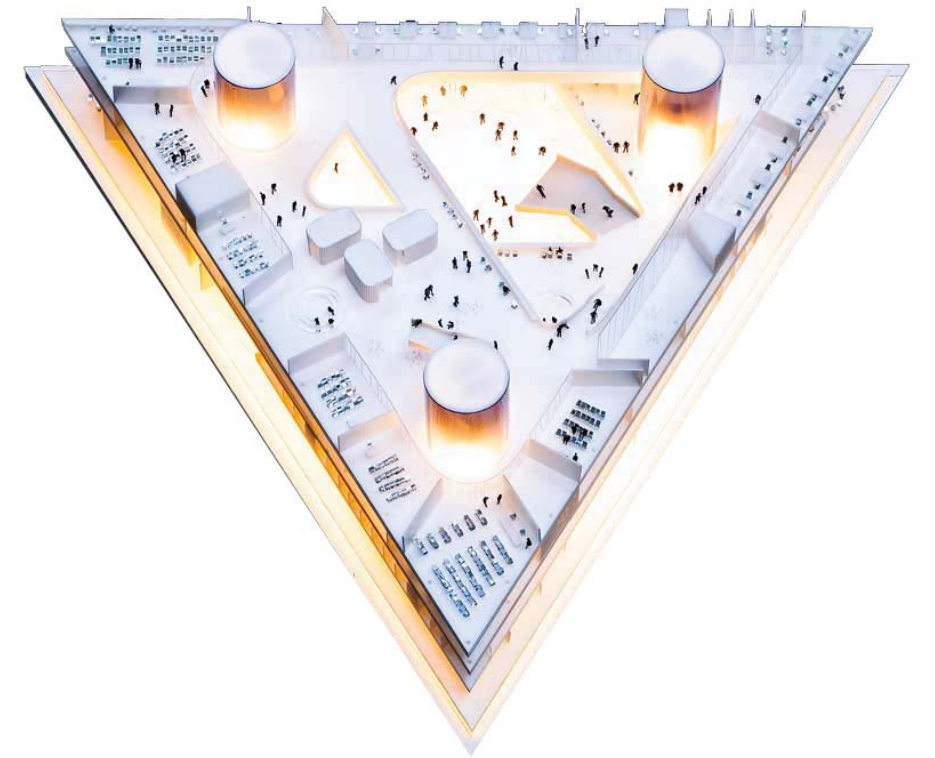
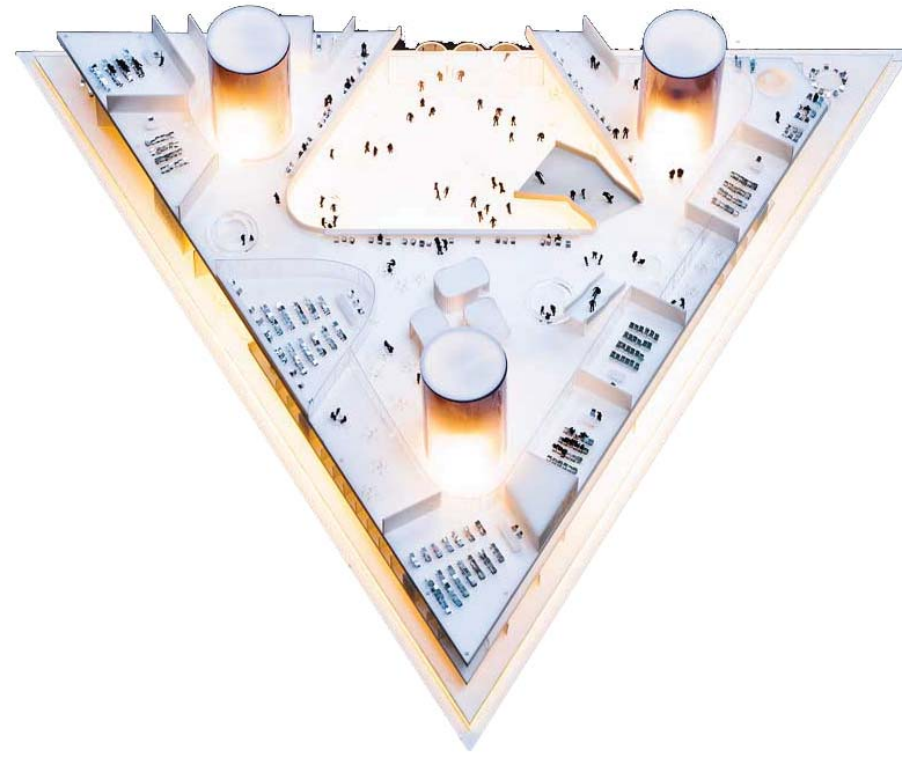
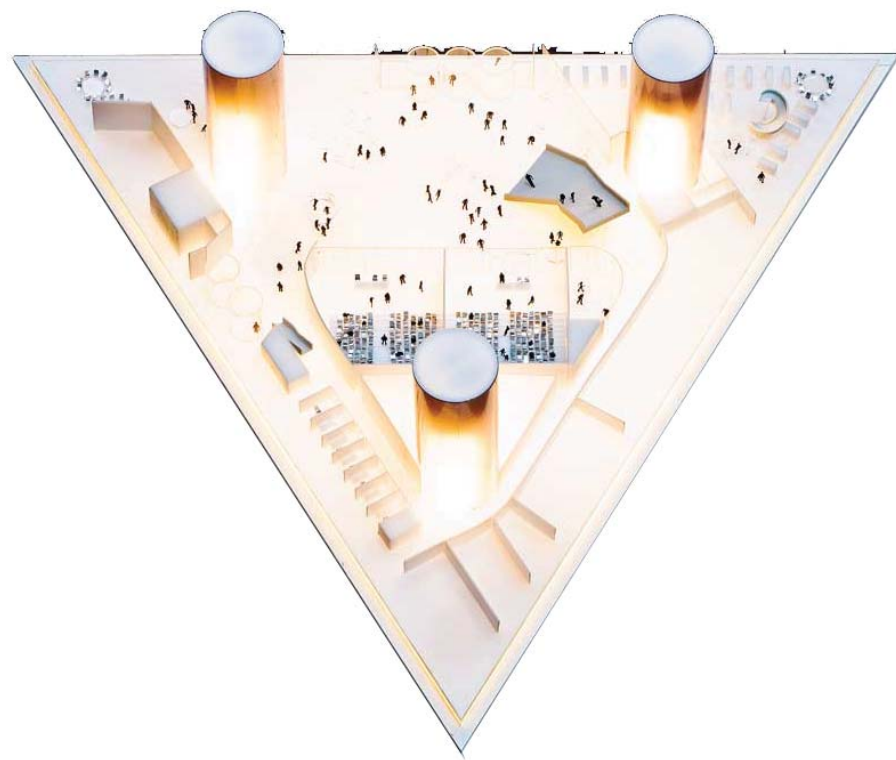


The Kolding Campus center is a large multi-purpose facility meant to anchor classes and social spaces at the new University of Southern Denmark. The building is triangular in shape and is five floors tall. The project is designed to promote both group activities and also provide spaces for quiet contemplation and study. The project sets high sustainability standards in addition to creating a dynamic space for higher learning.



Case Study #3    Kolding Campus, Denmark    Henning Larsen Architects

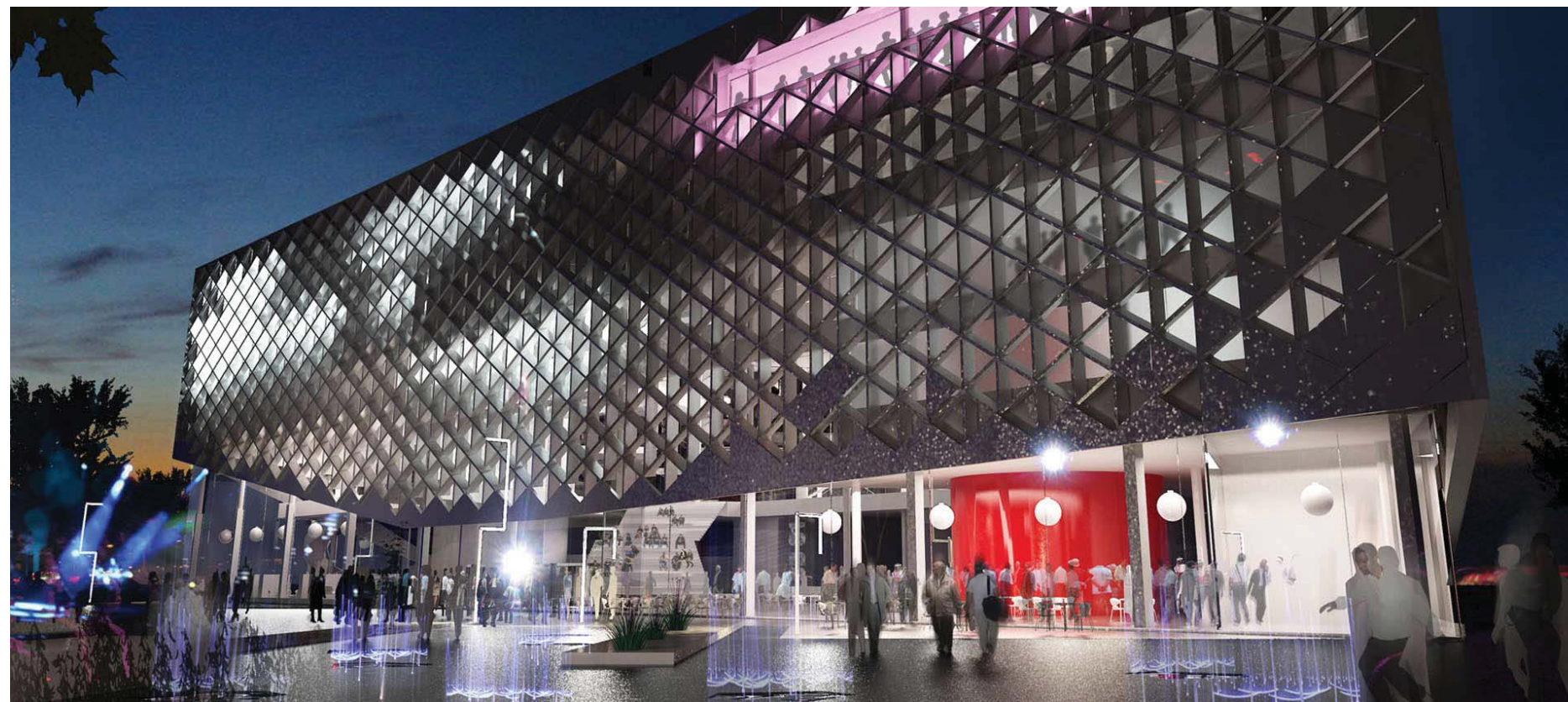
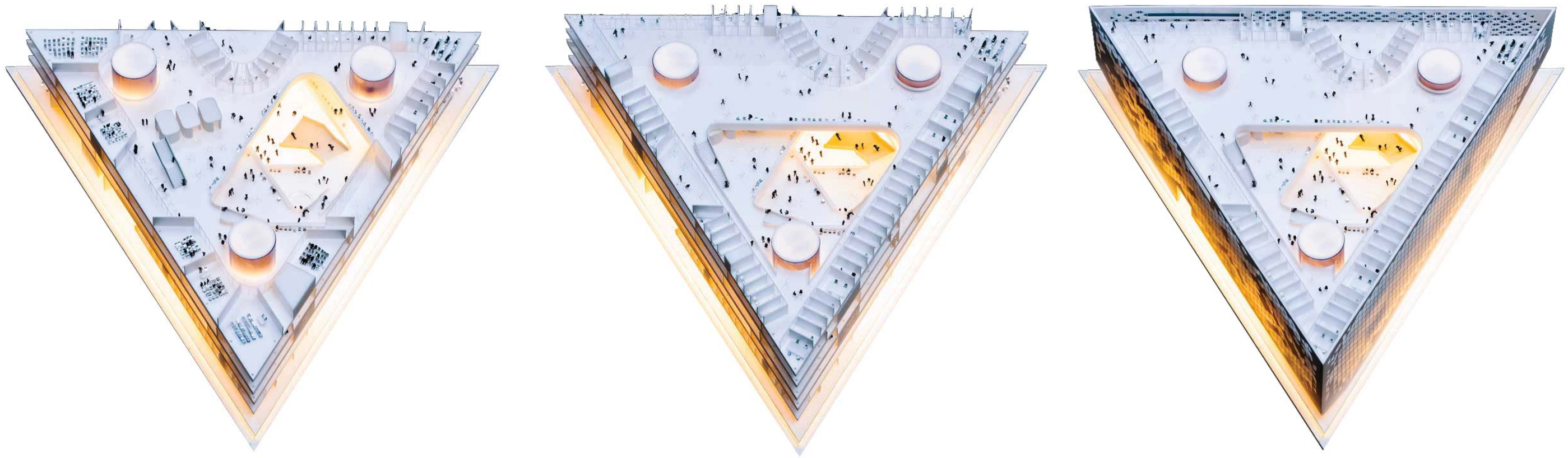




The building's triangular floors are unique on every level. Offices, quiet study areas and classrooms are located along the edges of the building. In the center is a large series of social spaces and public areas. The program is divided so that people have a reason to go onto every floor. The social activities face and interact with the surrounding town, creating an urban center inside of the building.

Case Study #3    Kolding Campus, Denmark    Henning Larsen Architects





The Kolding Campus features a number of sustainable elements. The facade provides solar shading. Water from a nearby river is used in the building's cooling system. The building has a low energy ventilation system and solar cells.